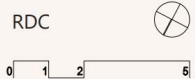
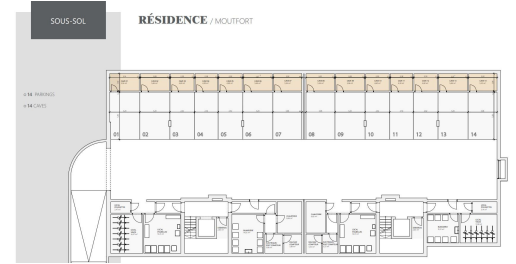
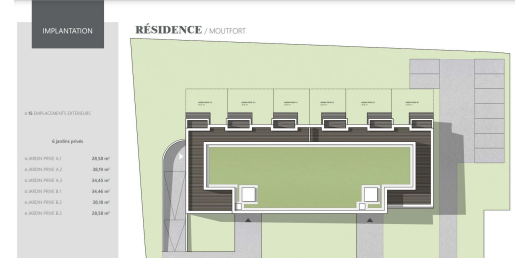
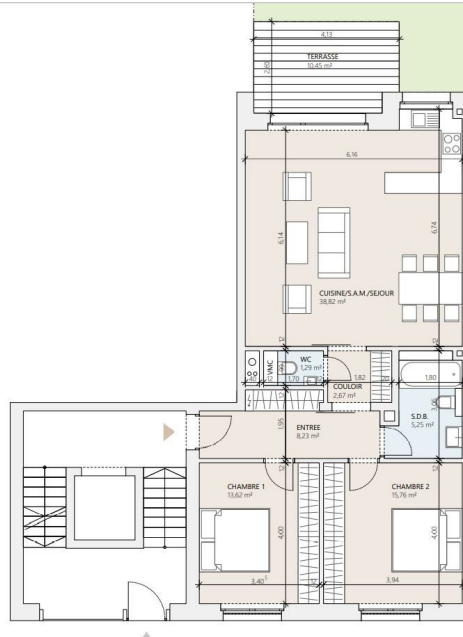


85,64 m²
surface habitable

2 chambres | 1 jardin privé | 1 terrasse

- ENTREE 8,23 m²
- CHAMBRE 1 13,62 m²
- CHAMBRE 2 15,76 m²
- SALLE DE BAIN 5,25 m²
- COULOIR 2,67 m²
- WC 1,29 m²
- CUISINE/S.A.M./SEJOUR 38,82 m²
- JARDIN PRIVE 28,58 m²
- TERRASSE 10,45 m²

RDC

DESCRIPTION OF THE PROPERTY

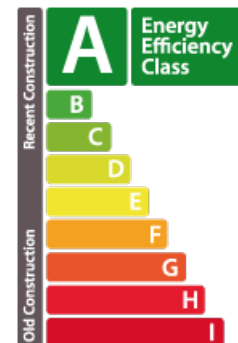
HD33 Real Estate Luxembourg offers you, in collaboration with Capelli S.A., this magnificent 2-bedroom VEFA apartment in Moutfort, in a green and quiet country setting. CONTACT & VISIT Alban Huyghé +352 661 705 033 CONTACT@HD33.LU Apartment A1 is located on the first floor of the "West Valley" residence with a surface area of approximately 85.64 m² and is distributed as follows:- 8.23 m² entrance hall;- A 38.82 m² kitchen opening onto a south-west-facing 10.45 m² terrace;- A 13.62 m² bedroom;- A second bedroom of approx. 15.76 m² ;- A separate bathroom of approx. 5.25 m² ;- Corridor approx. 2.67 m² ;- Separate WC approx. 1.29 m² ;The apartment also has a private south-west-facing garden of approx. 28.58 m². Grassing and hedges are included in the sale price. In the basement of the residence, there are two stroller rooms (approx. 2.47 m² and 3.14 m²), two bicycle rooms (approx. 14.07 m² and 11.98 m²) and two storage rooms (approx. 2.63 m²). The residence is equipped with an elevator, and ...

SPECIFICATIONS

Number of pieces : -
Nb. of bedroom(s) : 2
Area : 85.64m²
Number of bathrooms : 1
Equipped kitchen : Non

ENERGY PASS

Energy performance



Thermal insulation



✓ **Huyghe - Dubois Sàrl**

📍 **53, Boulevard Royal - 2nd Floor 2449**

📞 **284 825 086**

✉ **contact@hd33.lu**

🌐 **https://www.hd33.lu/en/detail-271**