

4.1

**79,57 m<sup>2</sup>\***

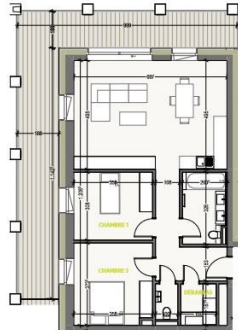
APPARTEMENT 2 CHAMBRES  
ETAGE 04

CHAMBRE 1	11,19 m <sup>2</sup>
CHAMBRE 2	13,37 m <sup>2</sup>
SÉJOUR - CUISINE	34,85 m <sup>2</sup>
SALLE DE BAINS	6,33 m <sup>2</sup>
TERRASSE	33,81 m <sup>2</sup>

 CHAMBRE 1  
 CHAMBRE 2  
 SÉJOUR - CUISINE  
 SALLE DE BAINS  
 TERRASSE

  
 Façade Ouest  


\* Sans les surfaces communes sur ce document sans déduire à titre informatif et sans être contractuel.  
Les surfaces sont des projections sur une surface plane. Elles ne tiennent pas compte des déformations dues au relief.  
Les surfaces sont des projections sur une surface plane. Elles ne tiennent pas compte des déformations dues au relief.  
Les surfaces sont des projections sur une surface plane. Elles ne tiennent pas compte des déformations dues au relief.  
Les surfaces sont des projections sur une surface plane. Elles ne tiennent pas compte des déformations dues au relief.



SOUTH VILLAGE  
HOWALD CITY



## DESCRIPTION OF THE PROPERTY

HD33 Real Estate offers you in collaboration with CAPELLI SA the extraordinary and unique project SOUTH VILLAGE in Howald. The key elements of this project are proximity and mobility. Designed with high-standing housing, with an exclusive appeal. The concept is LIVING, SHOPPING, DINNING, WORKING, MOVING. The Howald district is undergoing a metamorphosis and will become the new mixed residential business district, situated between the station area of Luxembourg City and the new business district of the Golden Bell/Gasperich. This area will be connected by the new streetcar route from Findel airport via Kirchberg, city center, train station, Howald and the terminus "cloche d'or" (in the future the streetcar route will continue to Esch-sur-Alzette/Belval). The project is located on the former commercial complex "Howald Retail Park". HD33 offers you this two-bedroom apartment in Lot 1 4.1 of 79,57 on the 4th floor, with a terrace in southwestern exposure. The sale price is based on the sup...

## SPECIFICATIONS

Number of pieces : -  
Nb. of bedroom(s) : 2  
Area : 79.57m<sup>2</sup>  
Number of bathrooms : 1  
Equipped kitchen : Non

✓ Huyghe - Dubois Sàrl

📍 53, Boulevard Royal - 2nd Floor 2449

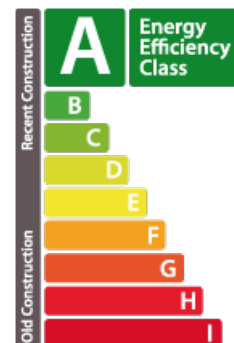
📞 284 825 086

✉ contact@hd33.lu

🌐 <https://www.hd33.lu/en/detail-377>

## ENERGY PASS

### Energy performance



### Thermal insulation

