

5.1

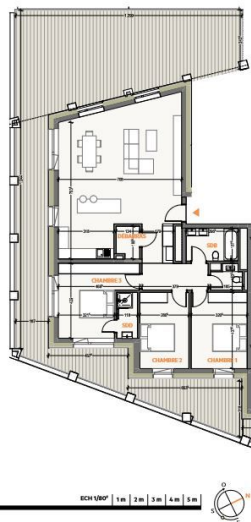
121,14 m²*

APPARTEMENT 3 CHAMBRES
ETAGE 05

- CHAMBRE 1/16,34 m² CHAMBRE 3/16,27 m²
- CHAMBRE 2/12,49 m²
- SÉJOUR - CUISINE 53,78 m²
- SALLE DE BAINS 5,68 m²
- SALLE DE DOUCHE 3,21 m²
- TERRASSE 99,95 m²

Facade Sud

* Sur les éléments communs est ce document sans droit de être reproduit ou être communiqué. La réimpression ou la diffusion sans la permission écrite de l'agent immobilier est formellement interdite. Les données sont pour information et ne constituent pas de promesse de vente. Les données sont pour information et ne constituent pas de promesse de vente. Les données sont pour information et ne constituent pas de promesse de vente. Les données sont pour information et ne constituent pas de promesse de vente.



SOUTH VILLAGE
HOWALD CITY



DESCRIPTION OF THE PROPERTY

HD33 Real Estate offers you in collaboration with CAPELLI SA the extraordinary and unique project SOUTH VILLAGE in Howald. The key elements of this project are proximity and mobility. Designed with high-standing housing, with an exclusive appeal. The concept is LIVING, SHOPPING, DINNING, WORKING, MOVING. The Howald district is undergoing a metamorphosis and will become the new mixed residential business district, situated between the station area of Luxembourg City and the new business district of the Golden Bell/Gasperich. This area will be connected by the new streetcar route from Findel airport via Kirchberg, city center, train station, Howald and the terminus "cloche d'or" (in the future the streetcar route will continue to Esch-sur-Alzette/Belval). The project is located on the former commercial complex "Howald Retail Park". HD33 offers you this 3-bedroom apartment in Lot 1 5.1 of 121,14, on the 5th floor, with a terrace in south-west-east exposure. The sale price is based on the ...

SPECIFICATIONS

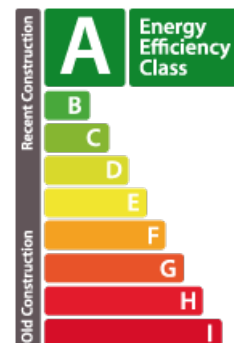
- Number of pieces : -
- Nb. of bedroom(s) : 3
- Area : 121.14m²
- Number of bathrooms : 1
- Equipped kitchen : Non

Huyghe - Dubois Sàrl

- 53, Boulevard Royal - 2nd Floor 2449
- 284 825 086
- contact@hd33.lu
- <https://www.hd33.lu/en/detail-409>

ENERGY PASS

Energy performance



Thermal insulation

